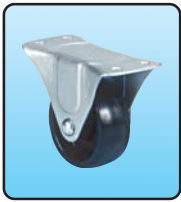


jesco® CASTERS



PO: Polyolefin



HR: Hard Rubber



SS: Semi Steel



PH: Phenolic



MR: Moldon Rubber



PU: Polyurethane



FP: Pneumatic

GENERAL DUTY CASTERS (250 - 275 lbs. capacity)

Use where economy is desired for light to medium material handling such as dollies, parts bins, portable racks etc.

Dia. "	W"	Type	Cap. lbs	Top Plate Size"	Bolt Pattern"	Swivel Radius"	H"	Swivel Part No.	Wt.	Rigid Part No.	Wt.
3 x	1.25	PO	250	3.1 x 4.1	2.3 x 3.3	2.4	3.6	801052	1.50	---	---
4 x	1.25	HR	275	3.1 x 4.1	2.3 x 3.3	3.1	5.0	802022	3.00	---	---
5 x	1.25	PU	250	4.0 x 4.5	3.0 x 3.0	4.0	6.0	804062	2.75	804061	2.25

HEAVY DUTY CASTERS (500 - 1200 lbs. capacity)

Ideal where more capacity is required. For platform trucks, trash containers, stock trucks, carts etc. Select the caster that best fits your needs.

Dia. "	W"	Type	Cap. lbs	Top Plate Size"	Bolt Pattern"	Swivel Radius"	H"	Swivel Part No.	Wt.	Rigid Part No.	Wt.
4 x	2	SS	700	4.0 x 4.5	2.6 x 3.6 or 3 x 3	3.4	5.6	803012	7.75	803011	6.75
5 x	2	PH	1000	4.0 x 4.5	2.6 x 3.6 or 3 x 3	4.1	6.5	805042	6.75	805041	5.75
5 x	2	MR	500	4.0 x 4.5	2.6 x 3.6 or 3 x 3	4.2	6.5	805082	7.75	805081	6.75
6 x	2	SS	1200	4.0 x 4.5	2.6 x 3.6 or 3 x 3	4.7	7.5	806012	9.00	806011	8.00
6 x	2	PU	1200	4.0 x 4.5	2.6 x 3.6 or 3 x 3	4.7	7.5	806032	10.50	806031	9.50
6 x	2	PH	1200	4.0 x 4.5	2.6 x 3.6 or 3 x 3	4.7	7.5	806042	7.50	806041	6.50
6 x	2	MR	500	4.0 x 4.5	2.6 x 3.6 or 3 x 3	4.7	7.5	806082	9.00	806081	8.00

HEAVY DUTY (600 - 1500 lbs. capacity)

These casters can be used for portable racks, utility trucks, conveyor operations, box trucks etc.

Dia. "	W"	Type	Cap. lbs	Top Plate Size"	Bolt Pattern"	Swivel Radius"	H"	Swivel Part No.	Wt.	Rigid Part No.	Wt.
6 x	2.5	SS	1500	4.5 x 6.2	3.3 x 5.2	4.2	7.5	807012	13.25	807011	12.25
6 x	2.5	PH	1500	4.5 x 6.2	3.3 x 5.2	4.2	7.5	807042	9.75	807041	8.75
6 x	2.5	MR	600	4.5 x 6.2	3.3 x 5.2	4.2	7.5	807082	12.00	807081	11.00
8 x	2.0	SS	1200	4.0 x 4.5	2.6 x 3.6 or 3 x 3	6.2	9.5	808012	13.75	808011	12.75
8 x	2.0	PU	1200	4.0 x 4.5	2.6 x 3.6 or 3 x 3	6.2	9.5	808032	12.50	808031	11.50
8 x	2.0	PH	1200	4.0 x 4.5	2.6 x 3.6 or 3 x 3	6.2	9.5	808042	8.75	808041	7.75
8 x	2.0	MR	600	4.0 x 4.5	2.6 x 3.6 or 3 x 3	6.2	9.5	808082	11.25	808081	10.25

HEAVY DUTY (1500 lbs. capacity)

Ideal for platform trucks, drag line operations, utility trucks etc.

Dia. "	W"	Type	Cap. lbs	Top Plate Size"	Bolt Pattern"	Swivel Radius"	H"	Swivel Part No.	Wt.	Rigid Part No.	Wt.
8 x	2.5	SS	1500	4.5 x 6.25	3.3 x 5.2	6.2	9.5	809012	15.75	809011	14.75
8 x	2.5	PH	1500	4.5 x 6.25	3.3 x 5.2	6.2	9.5	809042	12.00	809041	11.00

FULL PNEUMATIC CASTERS (320 lbs. capacity)

Greatest protection for transporting delicate materials and parts. Roller bearings.

Dia. "	W"	Type	Cap. lbs	Top Plate Size"	Bolt Pattern"	Swivel Radius"	H"	Swivel Part No.	Wt.	Rigid Part No.	Wt.
8 x	4	FP	320	4 x 4.5	2.6 x 3.6 or 3 x 3	6.2	11	810102	9.00	810101	8.00