



EEZY STAK®

This system has been designed and engineered to **SAVE UP TO 75%** on your setup time. Woven wire mesh panels are securely welded into a strong angle frame with a dark gray paint finish. All posts are painted safety yellow. Each panel and post is packaged then crated for extra protection. We also offer many options such as wainscoting, polycarbonate and acrylic panels, welding curtains and noise control panels. If you do not see the sizes that meet your requirements, just give us a foot print of your work area and we will design the



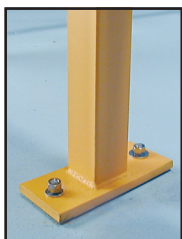
JESCO EEZY STAK system to meet your needs.

Technical Data

Mesh Opening:	2" x 1" mesh, 10 gauge wire
Angle Frame:	1 1/4" x 1 1/4" x 1/8"
Post:	2" x 2", 14 gauge
Door:	48" x 60"
Hardware:	Zinc plated

Note: Always follow OSHA, RIA and ANSI standards.

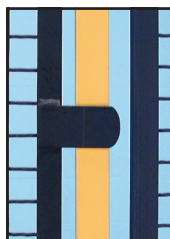
HARDWARE DETAILS



Post Foot



Door Latch



Door Stop



Top Bracket



Bottom Bracket



Cap

Part No.	Panels			Wt.
	W'	x	H'	
333501	10		5	78
333511	9		5	71
333521	8		5	65
333531	7		5	59
333541	6		5	53
333551	5		5	46
333561	4		5	35
333571	3		5	27

Part No.	Hinged Doors			Wt.
	W'	x	H'	
335201	3		5	66
335205	4		5	73
335207	5		5	81

Part No.	H	Wt.
Line Post		
336253	5'8"	15
Corner Post		
336273	5'8"	15
3-Way Post		
336283	5'8"	16
4-Way Post		
336293	5'8"	16
End Post		
336421	5'8"	15

